

888.00580

NOTES
 ±.....V = DC VOLTAGES
V~ = AC VOLTAGES

CONDITIONS OF DC VOLTAGE MEASUREMENT
 1. LINE VOLTAGE AT 125 160 220 VOLTS 50~
 2. LOUDNESS AT 0
 3. VOLTAGES MEASURED BETWEEN INDICATED POINTS AND POINT 4 OF PRINTED BOARD WITH 20000 Ω/V VOLTMETER

CONDITIONS OF AC VOLTAGE MEASUREMENT
 1. LINE VOLTAGE AT 125 160 220 VOLTS 50~
 2. LOUDNESS AT MAXIMUM BALANCE BASS AND TREBLE AT 1/2 SW1 POSITION: PHONO
 3. AMPLIFIER INPUTS CONNECTED TO A SOURCE AS ABOVE. INDICATED f = 1000 cps
 4. VOLTAGES MEASURED BETWEEN INDICATED POINTS AND POINT 4 OF PRINTED BOARD WITH VOLTMETER OF 1 MΩ OR MORE INPUT RESISTANCE

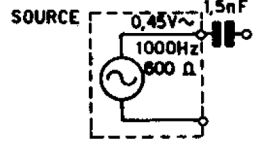


Fig. 2 — Schema elettrico LF 706